

# **Slovakia and Hungary Cooperation on cross-border health care provision**

Henrieta Madarova  
Martin Kultán

November 2010

# Outline

- About a region
- Project description
- Results so far

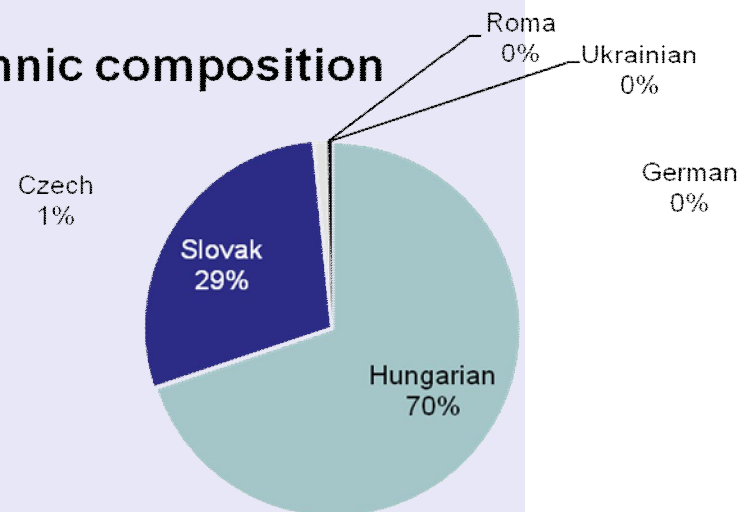
# Regional context

- Historically intertwined towns on right and left bank of Danube:
  - Sturovo/ Parkany – 10.807 citizens (2009)
  - Ostrihom/ Esztergom – 30.928 citizens (2009)
- Connected by bridge of Archduchess Marie Valerie of Austria.
  - built in 1598, destroyed in 1919
  - renovated in 1922, destroyed in 1944
  - rebuilt in 2001, 50% of the cost EU Phare project
- Only polyclinics in Sturovo
- Accessibility of inpatient facilities in Slovakia from Sturovo:
  - Faculty Hospital Nove Zamky – 51 km
  - Hospital Komarno – 48 km
  - Hospital Sahy – 51 km

## Párkány and Esztergom in 1664



## Ethnic composition



# Involved parties

## **Dovera Health Insurance Company, Inc., Slovakia**

- Market share in Nove Zamky region – 35,19%
- To improve the access to health care to insurees in Sturovo and surrounding at comparable price

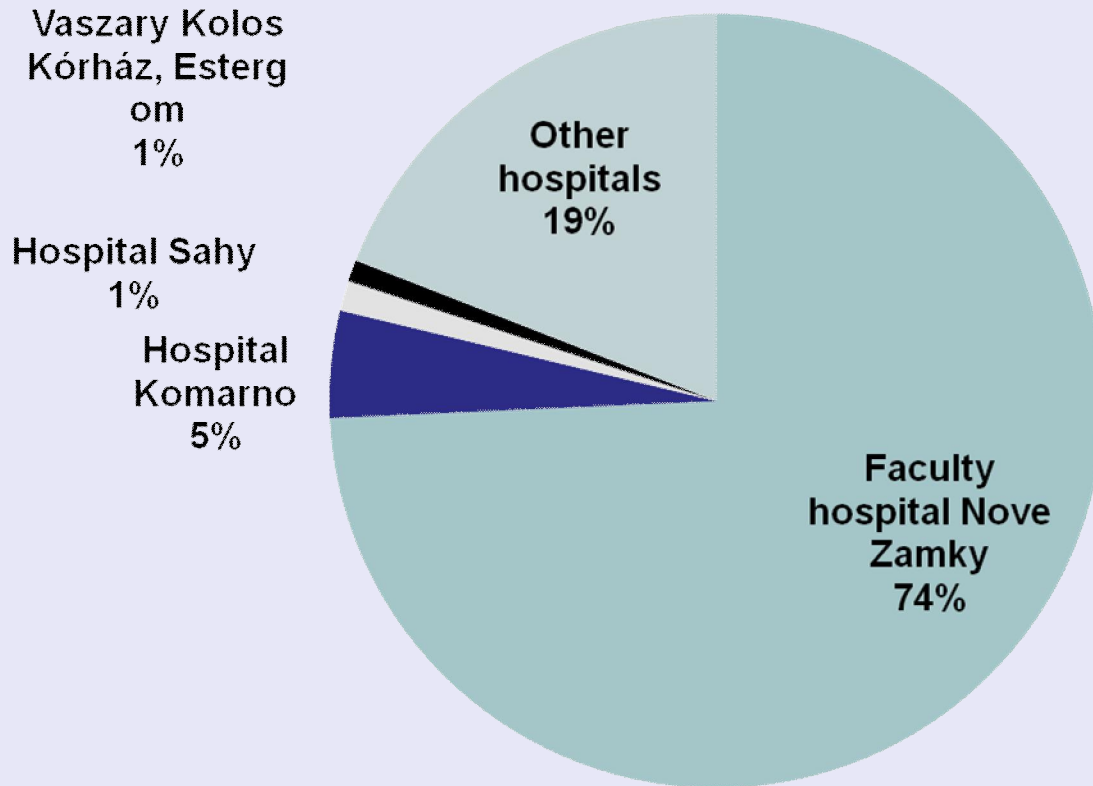
## **Vaszary Kolos Korhasz Hospital in Esztergom, Hungary**

- Only 5 km from Sturovo
- Rated as 10th out of 160 hungarian hospitals
- Improve utilization of capacities as well as budget
- Expectations: 30 hospitalizations/ month
- Plans: EU project with Polyclinics Sturovo (failed)
- 13 departments: internal, neurology, psychiatry, surgery, urology, traumatology, ORL, ophthalmology, gynaecology and obstetrics, intensive medicine, reumathology, oncologic rehabilitation, balneology and treatment rehabilitation

# Project

- ❑ 1<sup>st</sup> project by Sideria-Istota Health Insurance Company (merged with Dovera HIC):
  - acute care,
  - elective care only with pre-authorization,
  - possibility to prescribe and provide reimbursable drugs
- ❑ 2<sup>nd</sup> project - standard contract signed and valid from November 2009
- ❑ Entitlements are covered based on the European Card of Insuree (issued free of charge by Dovera HIC)
- ❑ Only inpatient care— both acute and planned care covered, including dialysis during the hospitalization and post-discharge check-up related to provided care

# Results so far (estimate, Nov 2009 – Jun 2010)

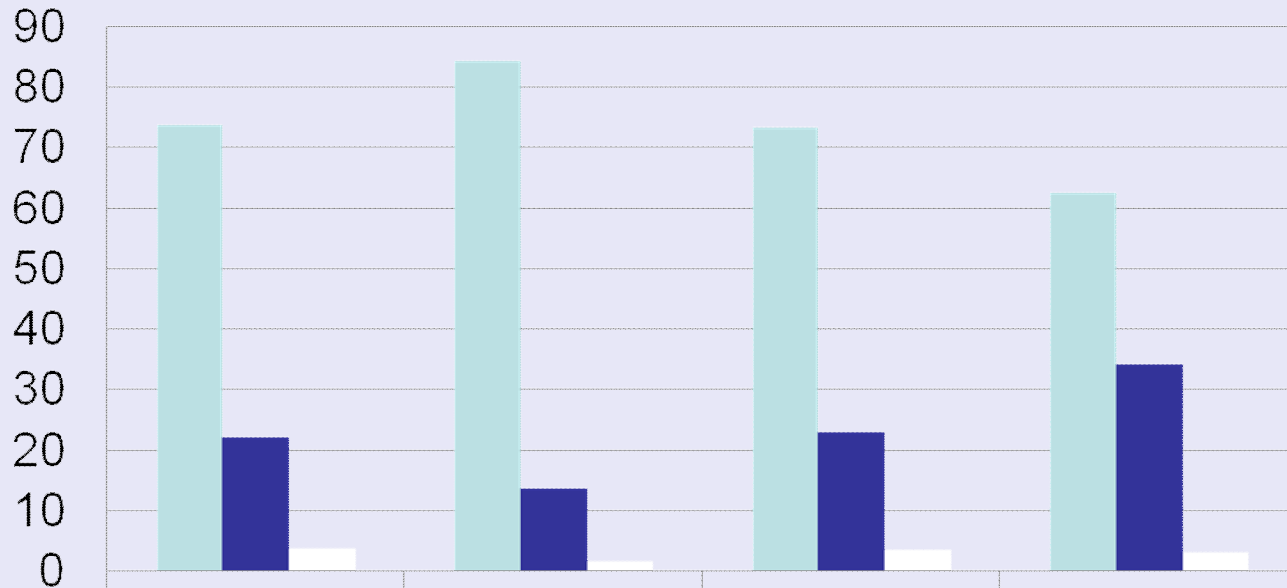


- Nov 2009 – Sep 2010: only 22 hospitalizations
- Success or a failure?

# Major supporting and inhibiting factors

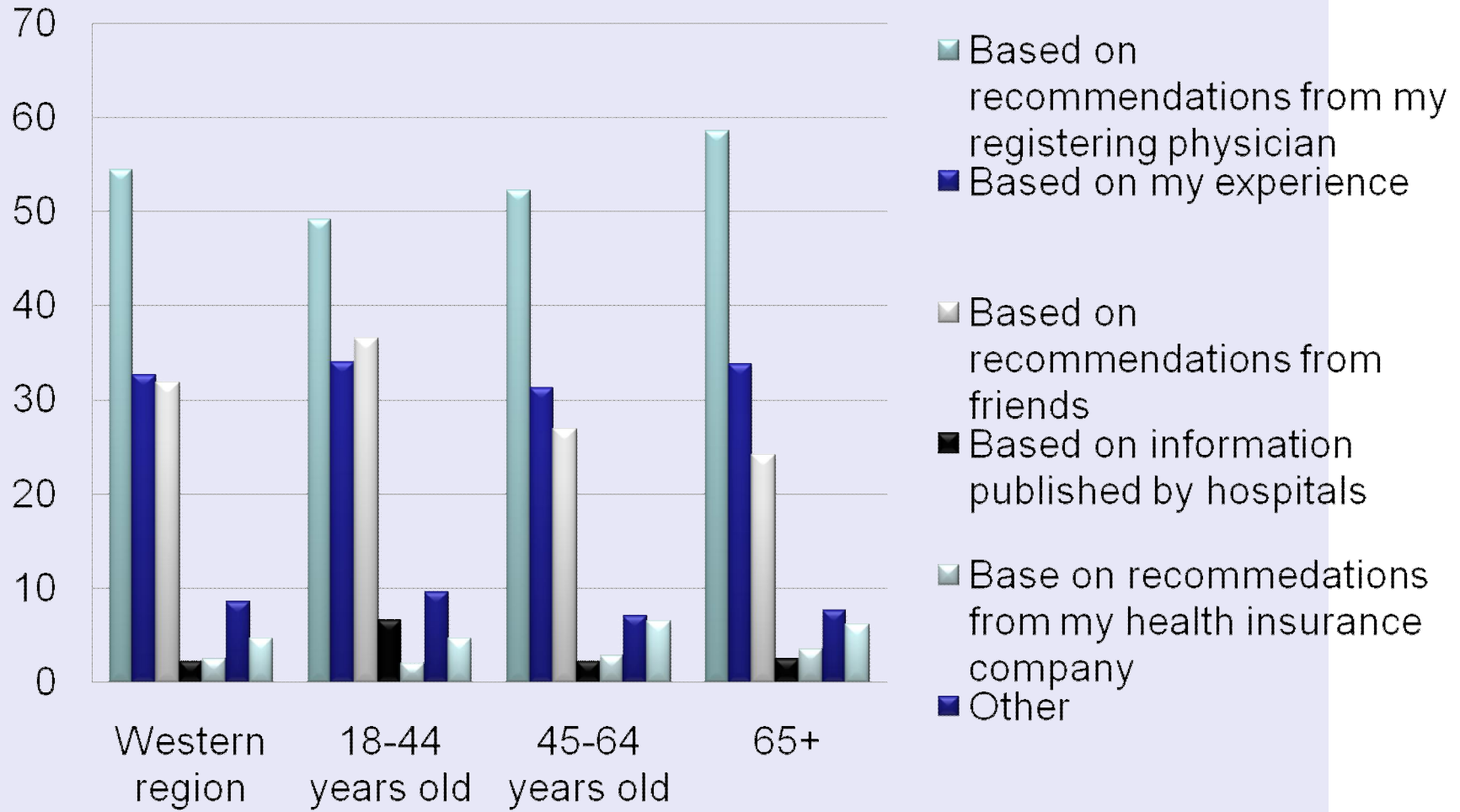
- ❑ Hospital discussed with physicians at the polyclinics
- ❑ Anecdotally, some physicians work shifts in Hospital, Esztergom
- ❑ Several articles in national and regional journals
- ❑ The limited scope of covered health services – only inpatient, problem with continuity of care
- ❑ Language barrier – continuity of care after discharge, the discharge medical record must be translated (specialized terminology)
- ❑ Not included into the network of contracted providers
- ❑ Formal referral from an outpatient care provider needed

# If you would need inpatient care, would you choose hospital based on quality or accessibility?



|               | Western region | 18-44 years old | 45-64 years old | 65+  |
|---------------|----------------|-----------------|-----------------|------|
| Quality       | 73,9           | 84,4            | 73,4            | 62,7 |
| Accessibility | 22,3           | 13,8            | 23              | 34,2 |
| Do not know   | 3,8            | 1,8             | 3,6             | 3,1  |

# Based on what do you choose your hospital?



# Further plans

- ❑ To evaluate results in-depth
- ❑ To improve the promotion and communication between providers of health services in Sturovo and Esztergom
- ❑ To think of possible roll-offs of the project to other regions

**Thank you for your attention. Questions?**