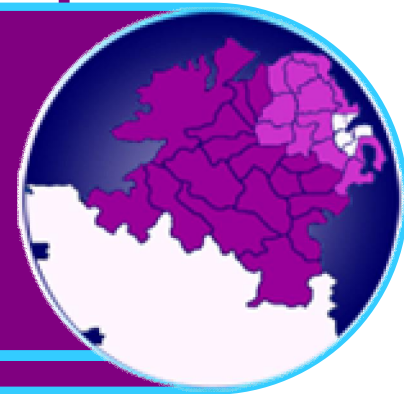


Presentation to the EUREGIO II workshop on Work Package 4 (WP 4) 22 Nov 2010



WP 4 – Making Effective use of the Structural Fund INTERREG

Sadie Bergin, Communications and
Corporate Governance Manager, CAWT



European Union
European Regional
Development Fund
Investing in your future



cooperation and working together
for health gain and social well being in border areas



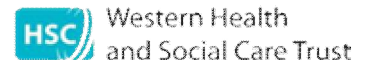
Health and
Social Care



Feidhmeannacht na Seirbhíse Sláinte
Health Service Executive



Southern Health
and Social Care Trust



Western Health
and Social Care Trust

Presentation Aims

- ✦ Summarize the CAWT Case Study for WP 4 of the EUREGIO project
 - Short history of cross border co-operation
 - Structural funds support
 - Cross border projects
 - Organisational structure
 - Cornerstones / Challenges
 - Recommendations for other regions

Structural Funds

- ◆ CAWT has a long history in managing EU structural funds – 14 years
- ◆ PEACE 1 (1996)
 - Selected areas of health e.g. acute hospital services, ambulance services, primary care etc
- ◆ EU INTERREG IIIA & PEACE II (2003 -2008)
 - Over 40 cross border projects
 - Included all areas of health and social care
- ◆ EU INTERREG IVA (2009 – 2013)
 - 12 strategic, large scale projects
 - ‘Putting Patients, Clients and Families First’

The journey to securing EU funding

Jan 07

- Evaluation and Strategic Plan 2007 – 2013

May 07

- The Special EU Programmes Body (Managing Authority) indicate their outline requirements

June -
Sept 07

- Consultations /workshops throughout CAWT region

Sept -
Oct 07

- Consultation with Community and Voluntary sector

Oct 07

- Business case submitted to both RoI and NI Departments of Health

Dec 07

- Departments of Health submit application to the EU INTERREG IVA programme

Dec 08

- CAWT developed project management structure and detailed project targets

June 09

- Ministers for Health formally announce €30/£24 million for cross border health

Oct 09

- Project manager appointment process completed

CAWT – Past projects

ACUTE SERVICES

Ear, Nose and Throat Services

Radiotherapy Services (Donegal patients)

Oral Maxillio Facial Services

Renal Network

Diabetes Info System

Recompression Services

DISABILITY

Employment support project

Carers Research Study

Continence Awareness/Support

CHILDCARE

Children's services Planning & Information

Children's Services Outcomes framework

Foster Care Support Study

OLDER PEOPLE

Good Morning Inishowen

HEALTH PROMOTION

Steering to Safety - RTCs

Parents as Sex Educators

Health Impact Assessment

Health Inequalities

Workplace Health

Mental Health Training

EMERGENCY PLANNING

Major Incident Planning

PRIMARY CARE

North West dental skills centre

Cross Border GP Out of Hours

Care of Type 2 Diabetes

PUBLIC HEALTH

Health Protection

Safefood/Food allergy

Traveller Health

'Putting Patients, Clients & Families First' projects



European Union

European Regional
Development Fund

Investing in your future

- ◆ **Acute Hospital Services**
- ◆ **Clinics for Sexually Transmitted Infections**
- ◆ **Development of Eating Disorder Services**
- ◆ **Multi Level Alcohol Harm Reduction**
- ◆ **'Turning the Curve' – Autism Support Project**
- ◆ **Improving Outcomes for Children and Families**
- ◆ **Support for Older People**
- ◆ **Preventing and Managing Obesity**
- ◆ **Support for People with a Disability**
- ◆ **Tackling Social Exclusion and Health Inequalities**
- ◆ **Tackling Diabetes in High Risk Clients**
- ◆ **Workforce Mobility**

CAWT partnership unique features

- ◆ CAWT is a partnership not a single organisation
- ◆ CAWT is not a legal entity
- ◆ CAWT does not have an independent statutory existence

CAWT Organisational Structure



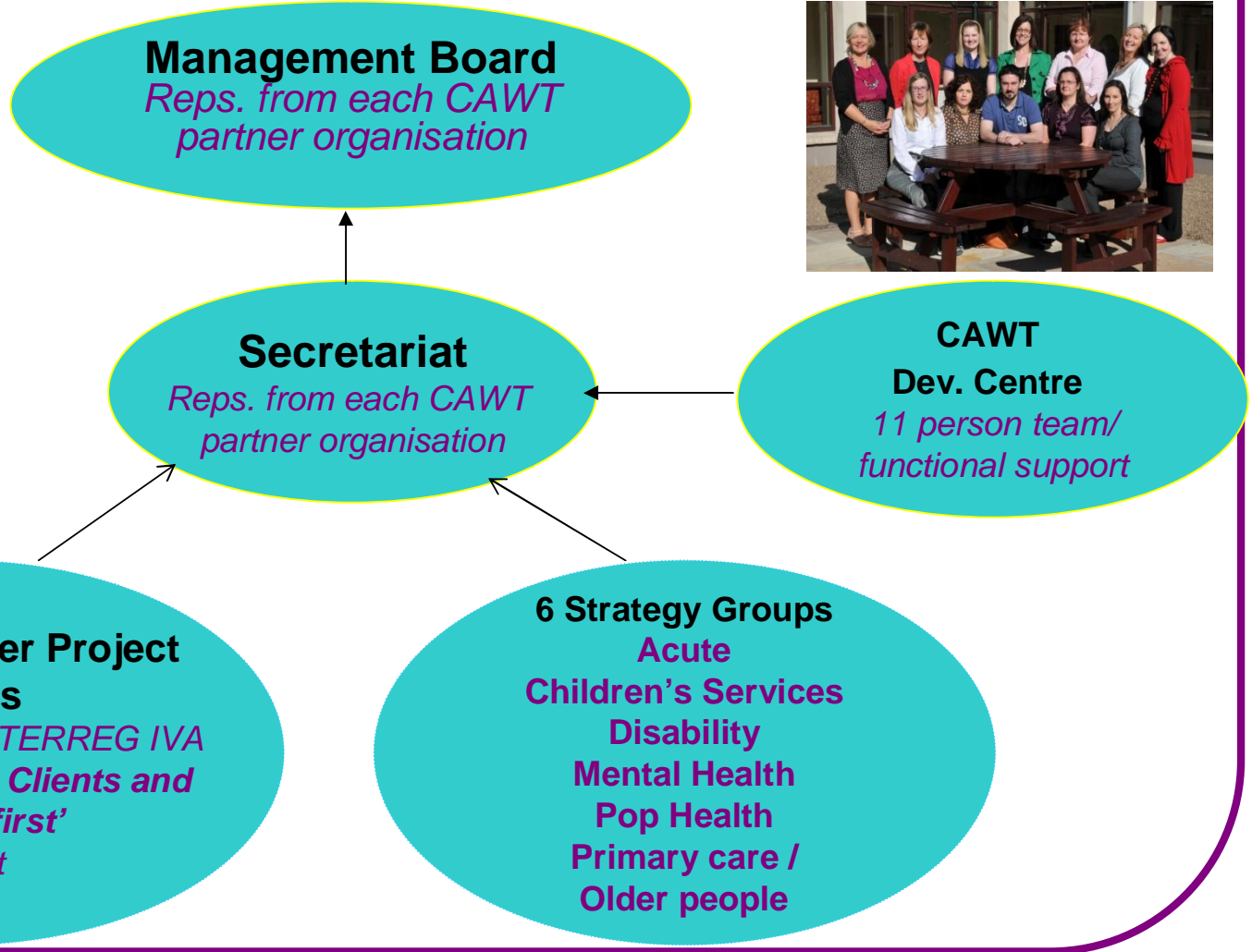
Management Board
Reps. from each CAWT partner organisation

Secretariat
Reps. from each CAWT partner organisation

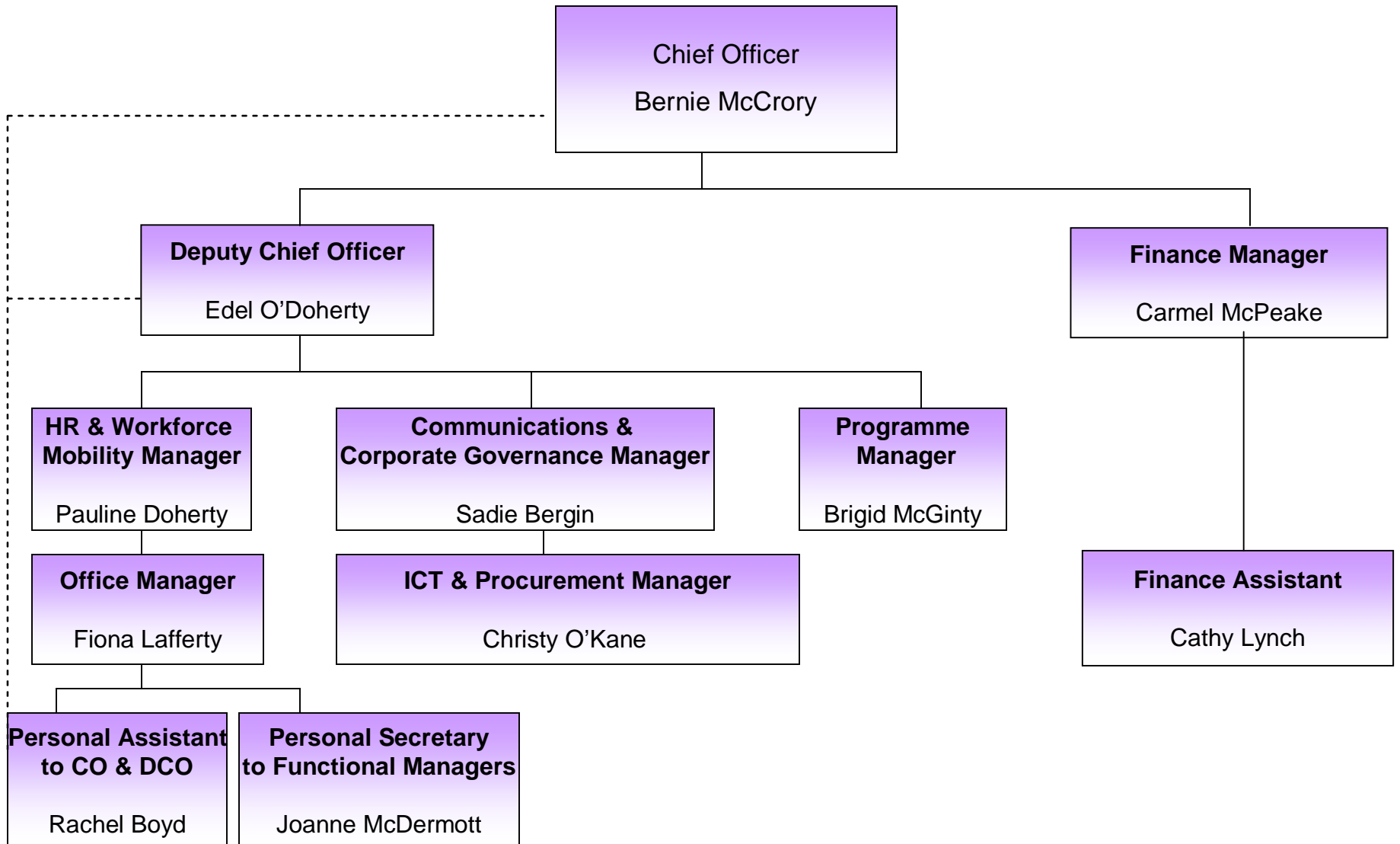
CAWT Dev. Centre
11 person team/ functional support

12 cross border Project Boards
Manage the EU INTERREG IVA 'Putting Patients, Clients and Families first' project

6 Strategy Groups
Acute
Children's Services
Disability
Mental Health
Pop Health
Primary care / Older people



CAWT Development Centre Structure



Cornerstones

- ◆ Strategic Approach
- ◆ CAWT Development Centre
- ◆ CAWT Secretariat and Management Board
- ◆ Health staff - cross border 'champions'
- ◆ European Union structural funding
- ◆ Departments of Health – Lead partners

Challenges

- ◆ Differing health systems
- ◆ Bureaucracy
- ◆ Health reforms
- ◆ Economic considerations
- ◆ Regionalisation of services

Recommendations

- ◆ Access to EU structural funds
- ◆ Dedicated centralised unit for CB activity
- ◆ Consultation
- ◆ Government and Department support
- ◆ Projects linked to priorities and policies
- ◆ 'Top level' commitment
- ◆ Tenacity in dealing with barriers

Recommendations

- ◆ Working 'outside of comfort zone'
- ◆ Clear vision and plan
- ◆ Project Board role
- ◆ Project management tools
- ◆ Governance
- ◆ Communications / publicity strategy
- ◆ Effective evaluation

The 'complexities' of cross border work!

